

CNB 76 #2 – 2014

KEY FEATURES

- Performance carbon mast by Hall Spars. Rod rigging
- Carbon V boom by Hall Spars, with hydraulic outhaul
- 3DI NORTH SAILS
- NEW NORTH Main-sail (2020)
- Teak deck with grey caulking
- Complete check-up standing rigging (2020)
- Carbon & teak steering wheels
- Telescopic cockpit table, convertible into a low table or into a sunbath area
- Bow thruster, retractable
- Ice Maker 220V in the saloon
- Williams Turbo Jet 385 tender in a garage (2017)

Link to watch the CNB 76 Builder's video <https://vimeo.com/77708942>

ASKING PRICE: 1,920,000€ VAT not paid

Location: Spain

SPECIFICATION

Guests	6 in 3 Cabins	Air draft	33.97 m / 111'
Crew	2 in 1 cabin aft	Ballast	12.1 t / 26,675 lbs
Builder	CNB	Displacement	43 t / 94,800 lbs
Model	CNB 76	Main engine	VOLVO D4 180 HP (3116 h)
Built	2014	Generator	ONAN 17,5 Kw/h (2690 h)
Length	23.40 m / 76'	Construction	Composite glass/carbon
Beam	6.10 m / 20'	Designer	Philippe Briand
Draft	3.50 m / 11'6"	Interior designer	Jean-Marc Piaton & Rafael Bonet

Mast

I	31.50 m / 103'3"
J	9.06 m / 29'7"
P	31.00 m / 95'1"
E	9.60 m / 31'5"

Tanks

Fresh water capacity	1 500 l / 396 gal
Fuel capacity	2 500 l / 660 gal
Grey & black water cap.	3 x 100 l / 3 x 26 gal

Sails by NORTH

Full batten Mainsail NORTH 3DI	172 m2 / 1,851 sq. ft	(May 2020)
Furling Genoa NORTH 3DI	152 m2 / 1,636 sq. ft	(2014)
Furling Staysail NORTH 3DI	82 m2 / 882 sq. ft	(2014)
Code S NORTH	462 m2 / 5,166 sq. ft	(October 2014)
Asymmetrical heavy spinnaker	400 m2 / 5,166 sq. ft	(October 2014)

CNB 76 #2 OPTION LIST

Sirocco ambiance: Honey coloured oak on bulkheads and floorboards

White gel coat hull

Teak deck with grey caulking

Saloon cushions in leather

Cockpit cushions, including helm seats cushions

Performance carbon mast by Hall Spars. Mast is 2 meters higher than std, Clear coat finish with visible carbon fibre, Rod rigging

Carbon V boom by Hall Spars, with hydraulic outhaul

Asymmetrical spinnaker rigging with tack line, sheets, blocks and 1:1 halyard

Boom cover

Bimini top (with connection to sprayhood)

Cockpit covers

Covers for the wheels, the navigation panels, the cockpit winches, and the cockpit table. Garage white canvas screen.

Bow removable anchor protection.

2 x primary electric winches ST80 instead of manual (3 speeds)

2 x multi-function cockpit electric winches ST70 instead of manual (2 speeds)

Port winch at mast step (reefing lines) electric ST70 instead of manual (2 speeds)

3rd starboard winch at mast step (asymmetrical Spinnaker/Gennaker/Code 0) electric ST70 (3 speeds)

3rd speed on mainsail sheet winch

4th port winch at mast step (Spinnaker pole topping lift & gennaker furler control) manual ST70

Carbon & teak steering wheels "CNB Yachts by TCE"

Telescopic table in the cockpit. The table is mounted on two electric rams and can be converted into a low table, or into a sunbath area (mattress included)

Deck wash pump close to windlass (fresh & saltwater)

Deck wash outlet in cockpit (fresh water)

Removable and foldable carbon gangway 3,20m

120m anchor chain instead of 100m

Bow thruster, retractable, electric (with dedicated batteries bank) - Side Power

Additional engine (and thrusters) control on portside

Varifold folding propeller 4 blades

Additional 24V - 100Ah Battery Charger

Reverse cycle air conditioning in the saloon, the cabins, including the forepeak. The temperature of each room can be adjusted independently.

Additional fuel air heater system for extreme navigation condition

Water maker 220V Sea Recovery - Aquamatic 280 l/h

130L extra fridge in the galley

Laundry washer / dryer MIELE Marine 220V, 5 Kg integrated in the galley

Dishwasher MIELE Marine 220V integrated in the galley

Insinkerator in the galley sink

Lee boards for all beds

Audio and video equipment:

- Yamaha audio integrated equipment in saloon & cockpit

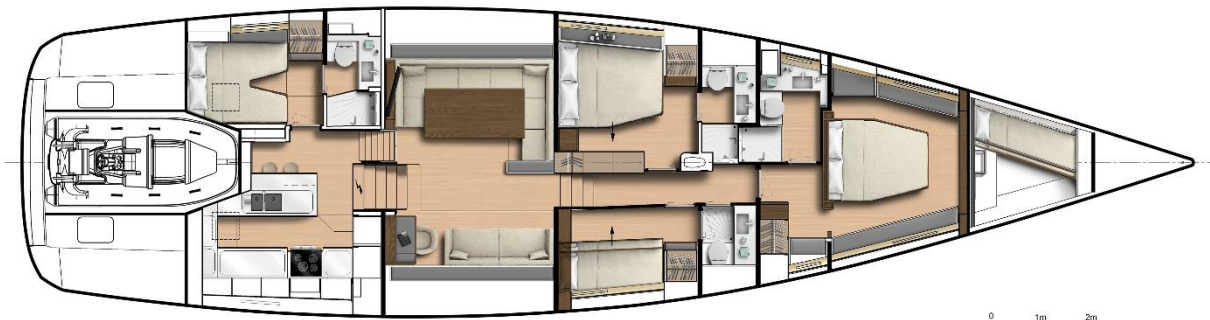
Raymarine navigation Pack:

- At chart table: one AXIOM XL 19 chart plotter, one p70s autopilot control unit.
- On each of the helm pods: one Axiom 9 Pro chart plotter, one I70 s multifunction display, one P70 S autopilot control unit
- Quantum 2 radar
- One AIS 700 (sender/receiver)
- One depth and speed transducer, one wind instrument transducer
- Calculator and gyrocompass,
- GPS
- Autopilot with wireless Smart controller
- Ray 90 VHF double handset with ASN
- AIS 650
- Volvo information on Raymarine screen
- TV / FM antenna from Omnimax

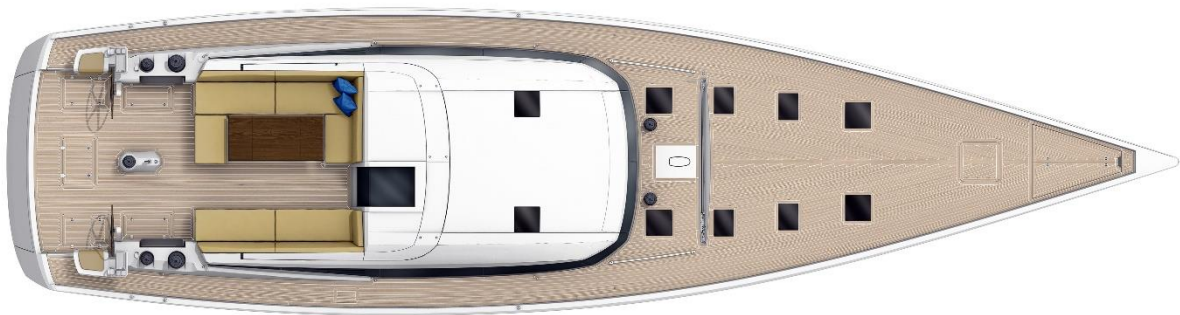
Miscellaneous:

- Fenders
- Mooring lines
- Tableware set
- Large spare parts for Engine, Generator and Water maker
- Bedding set
- Williams Turbo Jet 385 tender (2017)
- Bauer Junior 220 V diving compressor

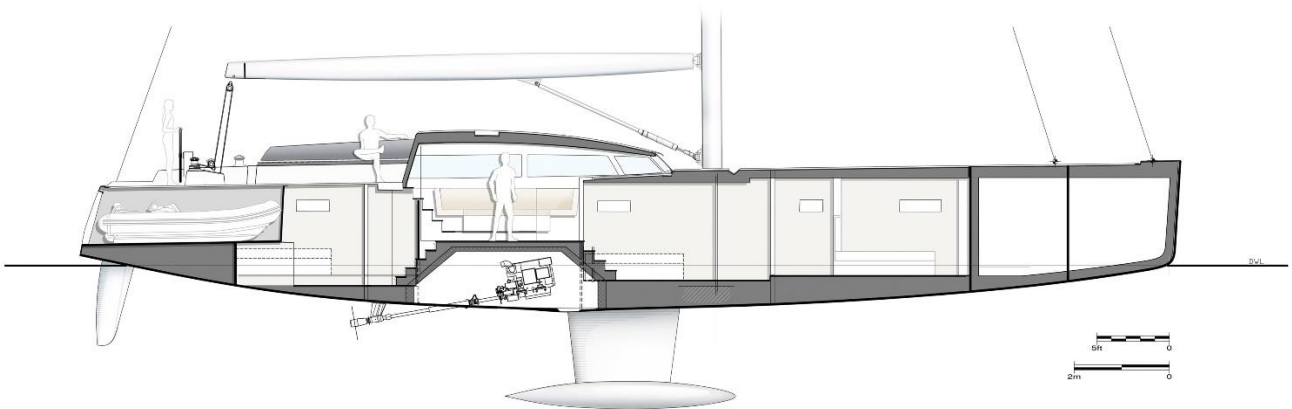
PLANS



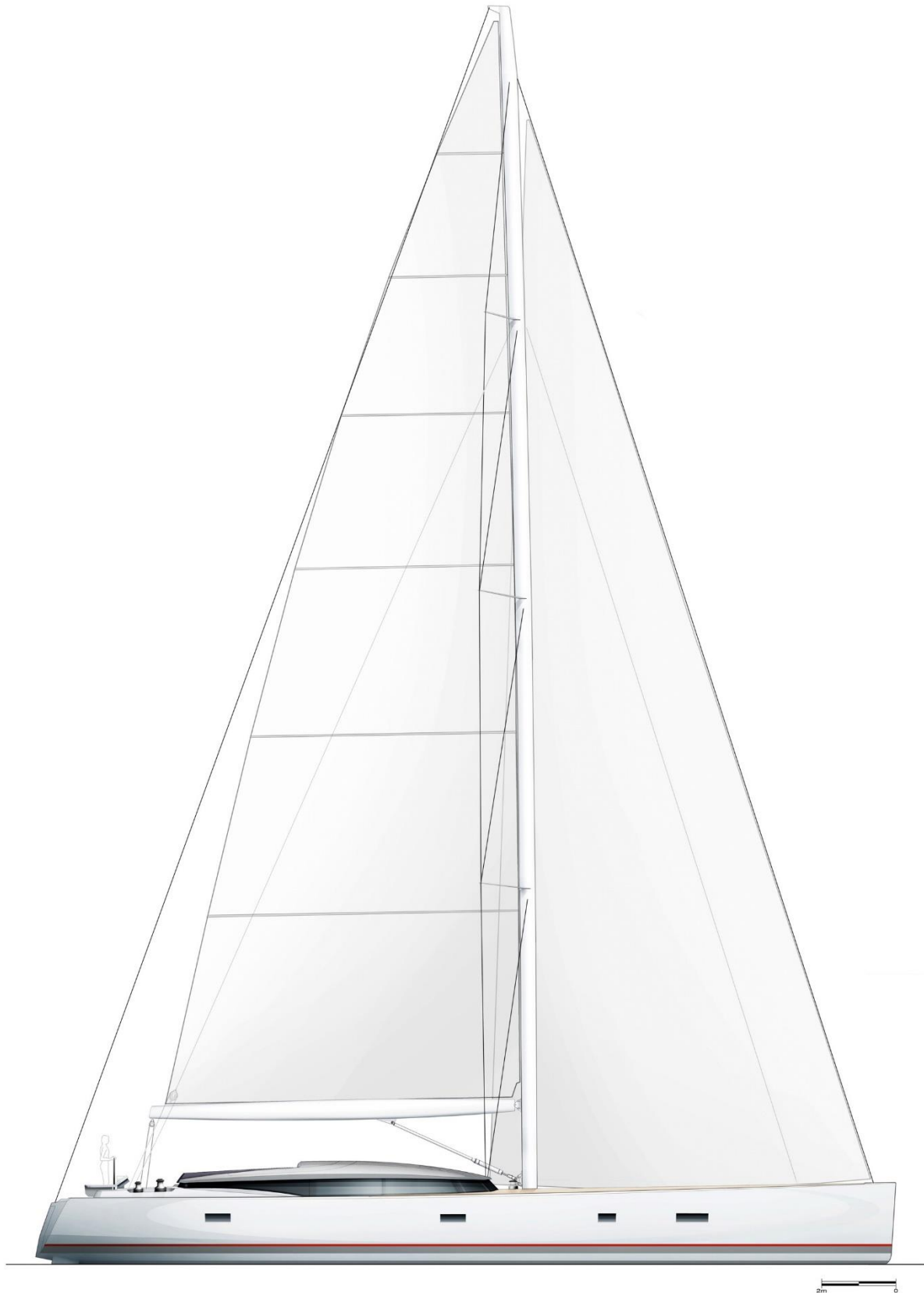
CNB 76 - Nov. 2012 - Mention obligatoire / Mandatory credit: 3D Absolute 2001



CNB 76 - Nov. 2012 - Mention obligatoire / Mandatory credit: 3D Absolute 2001



CNB 76 - Nov. 2012 - Mention obligatoire / Mandatory credit: 3D Absolute 2001



These details are prepared from information provided by the vendor and are intended only as a guide to give a fair description of the vessel, but their accuracy cannot be guaranteed, and they do not constitute part of any contract. A prospective buyer is strongly advised to check the particulars and to have the vessel fully surveyed by a qualified marine surveyor. This vessel is offered subject to prior sale, price change or withdrawal without notice.