

CNB 76 (2023) - Rare Opportunity – Near New Condition



Launched in July 2023, this CNB 76 represents an exceptional opportunity in the luxury yacht market. Designed to offer remarkable sailing performance while ensuring optimum comfort on board, she has been used very little since her delivery, with only 1,400 miles sailed, less than 330 engine hours, and barely 510 generator hours. So this is a virtually new yacht, available with no waiting and no uncertainty over new construction. This yacht combines renowned seaworthiness, an elegant and timeless design, and a layout designed to make life on board comfortable for guests and crew alike. With spacious, light-filled interiors, a luxurious owner's cabin, state-of-the-art technical equipment and a high level of finish, the CNB 76 is perfectly suited to both ocean cruising and coastal escapades.

The advantages of this CNB 76

- ◆ Low usage: only 1,400 miles, 328 engine hours, 508 generator hours, 100 hours for the watermaker
- ◆ 3Di North Sails, high-performance rigging and simplified manoeuvres with electric winches and hydraulic furlers
- ◆ Modern comfort: night-time air conditioning without generator, panoramic saloon, wine cellar, Miele appliances
- ◆ Configuration 3 guest cabins + 2 crew cabins with separate areas
- ◆ Numerous water sports: Williams dinghy

LAFOURCADE/YACHT BROKER

o.lafourcade@yachtbroker.fr - +33 680 593 873

- ◆ Top-of-the-range options: navy blue hull paint (2025), custom interior wood, black boom and mast, hydraulic swim platform
- ◆ Raymarine electronics complete with radar, AIS, GPS, wireless autopilot, and multiple multifunction displays

An ideal configuration for cruising

This CNB 76 is designed for comfortable cruising, with a small crew or with staff. Its fluid deck layout, bow and stern thrusters, and centralised navigation controls at the helm stations make all manoeuvres easy. The spacious interior and exterior living spaces allow you to make the most of both stopovers and ocean cruising, in a warm, elegant and reassuring atmosphere.

Conclusion

This yacht represents a rare alternative on the market: a prestige yacht, recent, fully equipped and immediately available. An ideal solution for those wishing to start sailing this summer to the highest standards, without waiting for a new boat to be built.

Asking price : 3.400.000 € (Taxes not paid)
Visits by appointment only

KEY FEATURES

- | | |
|--|---|
| ✓ Luxury sailing yacht launched in 2023 | ✓ Vast saloon, bathed in light with panoramic views |
| ✓ Only 1400 miles sailing since launching | ✓ Air conditioning without generator all night |
| ✓ Only 328 hours on the main engine | ✓ Highly functional deck design |
| ✓ Only 508 hours on the generator | ✓ Swimming platform and tender garage |
| ✓ Only 100 hours on the water-maker | ✓ 3.85m Williams jet tender with 100 HP engine |
| ✓ Unrivalled sailing performance in comfortable cruising configuration | ✓ Great selection of water toys: |
| ✓ Sleeps 6 guests in 3 cabins, 3 bathrooms, 3 heads | 2 x Sea scooter |
| ✓ Sleeps 3 crew in 2 cabins, 2 bathrooms, 2 heads | Stand-up Paddle board |
| ✓ 3Di North Sails | Donut |
| ✓ Bow and stern thrusters | Wakeboard |
| ✓ Large interior and exterior spaces | Kneeboard |
| ✓ An interior layout with clearly separated areas for guests and crew | Water-ski |
| | Snorkeling gears |

OPTIONS INSTALLED

Interior

- Carpet in the owner cabin, ref. Tendresse 30
- Carpet in the saloon, ref. Tendresse 30
- Standard saloon cushions TROJAN 09 GREIGE
- Forepeak equipped for skipper. Equipped with 2 bunk beds, WC, shower, sink, locker. Deck hatch in PMMA
- Interior wood option: Mauka ambiance. Dark oak on bulkheads, light oak on floorboards
- Water maker 220V Sea Recovery - Aquamatic 280 l/h
- Termodinamica marine inverter air conditioning
- Reverse cycle air conditioning in the forepeak
- Wine cellar (35 bottles capacity)
- 130L extra fridge in the galley
- Ice Maker 220V Integrated in the saloon
- Laundry washer / dryer MIELE Marine 220V, 7 Kg, Integrated in the galley
- Dishwasher MIELE Marine 220V Integrated in the galley.
- Towel dryer in aft guest cabins head
- Towel dryer in middle port guest cabins head
- Telescopic table in the salon. The table is mounted on two electric rams and can be converted into a low table.
- Safe in owner's cabin

Deck / Hull

- Teak deck with grey caulking
- Teak on helms seats with Grey Caulking
- Carbon & teak steering wheels "CNB Yachts by TCE"
- Carbon bowsprit with anchor davit
- Hydraulic gangway 2,90m (Opacmare)
- Cockpit cushions. Sunbrella fabric, including helm seats cushions: Sunbrella SILVER SUNB 5035 152
- Bimini top, Sunbrella Plus SUNTT Silver 5035
- Covers for the wheels, the navigation panels, the cockpit winches, and the cockpit table.
- Garage with canvas screen. Sunbrella Plus SUNTT Silver 5035
- 2 x multifunction cockpit winches electric ST70 2 speeds, instead of manual
- 2 x primary cockpit winches electric ST80 3 speeds, instead of manual
- 3rd speed on mainsail sheet winch
- 3rd winch at mast step Starboard (asym. Spinnaker/Gennaker/Code 0) electric ST70 3 speeds located starboard forward to the mast step,
- 3rd speed on mainsail sheet winch
- 1 port winch at mast step (reefing lines) electrical ST70 instead of manual. Located backward on port at mast step (Winch 2 speeds)
- Retractable capstan on the foredeck
- 8 cleats 400mm Stainless steel mirror finish
- 2 aft custom fairleads
- Stainless steel fridge in the cockpit (25L)
- Telescopic table in the cockpit. The table is mounted on two electric rams and can be converted into a low table or into a sun lounging pad (mattress included).
- Deck wash pump close to windlass (fresh or salt water)

- Deck wash fresh water outlet in the cockpit
- Side boarding ladder
- Specific hull paint colour NAVY BLUE RAL 5011
- Vinylester resin for the hull and the transom (Mandatory for dark colours)
- Under water lights (Blue colour) 4 spotlights under the waterline, on the aft of the hull

Propulsion

- Bow thruster, retractable, electric Side Power, with dedicated batteries bank
- Stern thruster, retractable, electric Side Power, with dedicated batteries bank
- Varifold folding propeller 4 blades
- Additional engine and thrusters' controls on portside

Rigging

- Reckmann Hydraulic furler for genoa (aluminium mast)
- Staysail rig on fixed stay, with hydraulic furler (aluminium mast) With halyard, sheet and jammer
- Gennaker or Code 0 rigging (without furler) With sheets, 2:1 halyard and blocks
- Boom for in-mast furling mainsail. Boom painted in black W
- In mast hydraulic furling (hydraulic outhaul)
- Mast painted in Black W
- 6 spreader LED lights facing up for aluminium mast

Electrics

- Onan Genset 19 Kva 50 Htz Monophase
- Additional 100Ah batteries charger

Sails

Set of Norths sails

- Mast Furling Mainsail w/Battens 3Di OCEAN 700 (UV Black)
- Furling Jib with Battens 3Di OCEAN 700 (UV Black)
- Self-tacking furling Inner Jib 3Di OCEAN 700 {UV Black}

Notes:

- UV covers at leach and bottom for jib and staysail in black.
- Outhaul cover of furling mainsail also in black
- The batten pockets in grey matching with sail cloth colour.

Miscellaneous

- Williams tender SportJet 395
- 2 decorative stripes: HX45428B (metallic light grey)

Entertainment

- Yamaha audio integrated equipment in the owner's cabin
- Yamaha audio integrated equipment in saloon & cockpit
- TV flat screen 40" on lift in the saloon
- TV flat screen 32" in owners cabin L/

Electronics

- Raymarine Navigation Pack
- One radar Quantum 2
- one VHF DSC Ray 90 double handset with ASN (cordless cockpit handset)

- one AIS 700 (sender/receiver)
- one depth and speed transducer
- one wind instrument calculator
- gyrocompass
- one GPS
- one autopilot wireless Smart controller
- One Axiom 7 multifunction instrument located in the crew area (aft)

At chart table:

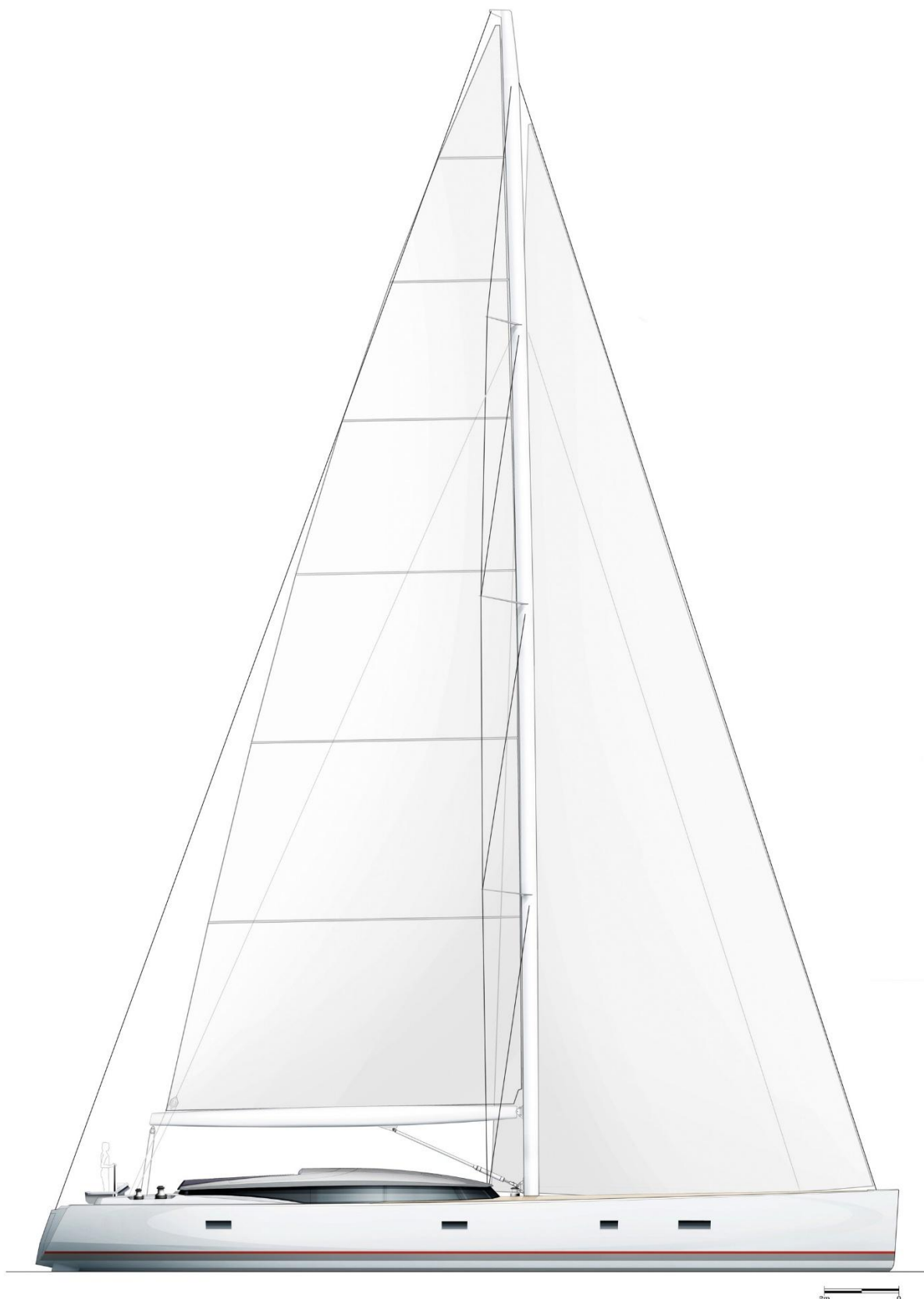
- Axiom 19XL chart plotter
- one p70s autopilot control unit

On each of the helm pods:

- Axiom pro 9 chart plotter
- one i70s multifunction display
- one p70s autopilot control unit.

Others:

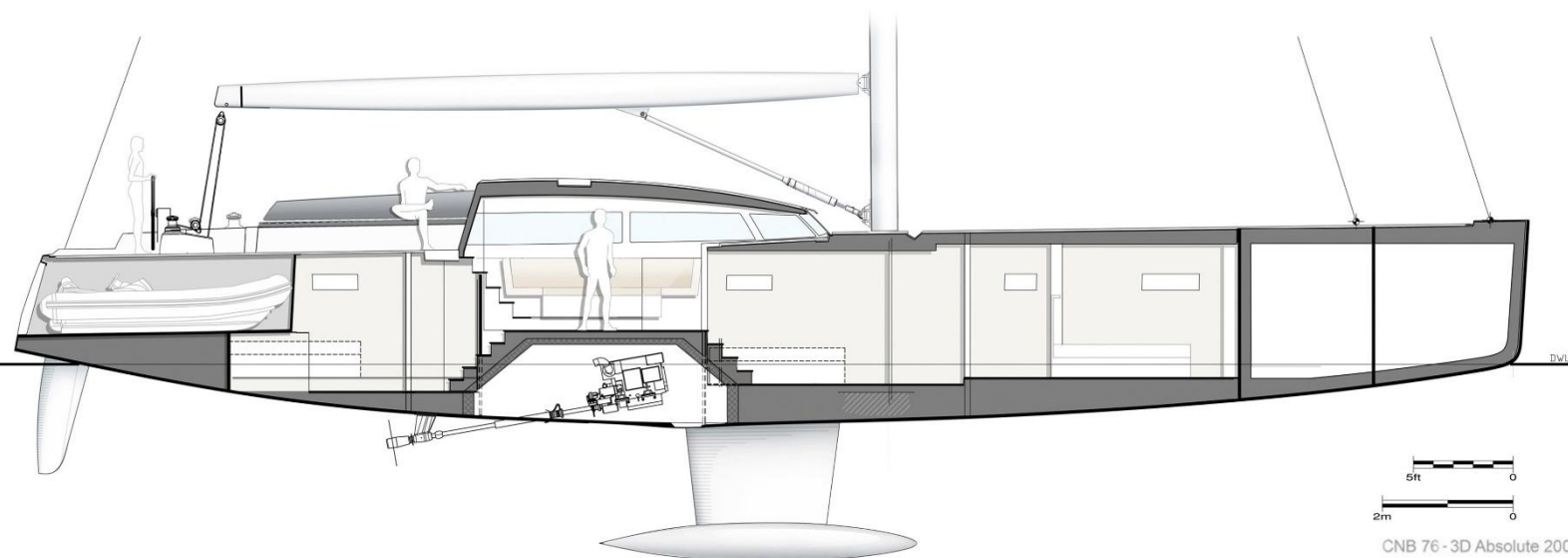
- TV/ FM antenna from Omnimax
- 4G / Wi-Fi router for private internet network on board



CNB 76 - Nov. 2012 - Mention obligatoire / Mandatory credit: 3D Absolute 2001



CNB 76 - 3D Absolute 2001



CNB 76 - 3D Absolute 2001

Standard Specifications

MAIN CHARACTERISTICS

DIMENSIONS

Length overall	24.85 m / 81'5
Hull Length	23.17 m / 76'
L.W.L	21.98 m / 72'1
Maximum beam	6.10 m / 20'

DRAFTS

Standard keel (cast iron fin & bulb),	14 900 kgs 3.00 m / 9'8
---------------------------------------	-------------------------

TANKAGE

Fresh water capacity	1,500 litres / 396 US Gal.
Fuel capacity	2,500 litres / 661 US Gal.

SAILS

	<u>Standard mast</u>	<u>Carbon mast (option)</u>	<u>In mast furling (Option)</u>
Mainsail	160 m ² / 1722 sq ft	172 m ² / 1851 sq ft	136 m ² / 1464 sq ft
Furling genoa	144 m ² / 1549 sq ft	152 m ² / 1636 sq ft	144 m ² / 1549 sq ft
Staysail	79 m ² / 850 sq ft	82 m ² / 882 sq ft	79 m ² / 850 sq ft
Asymmetrical spinnaker	440 m ² / 4736 sq ft	480 m ² / 5166 sq ft	440 m ² / 4736 sq ft

MAST

	<u>Standard mast</u>	<u>Performance mast (option)</u>	<u>In mast furling (Option)</u>
I	30.00m / 98'4	31.50m / 103'4	30.00m / 98'4
J	09.06m / 29'8	09.06m / 29'8	09.06m / 29'8
P	29.00m / 95'1	31.00 / 101'7	29.00m / 95'1
E	09.60m / 31'5	9,60 / 31'5	9.60m / 31'5

AIR DRAFT (without antennas)

Standard Mast.....	33.97 m / 111'4
Carbon Mast.....	36.50 m / 119'8

DESIGN

Naval architecture	Philippe BRIAND
Interior design	J-M. PIATON – R. BONET

CONSTRUCTION

- The hull and structural bulkheads are made of vacuum infused PVC foam / glass / carbon and resin sandwich. Built as per the process used for the one-off constructions for many years. Non structural bulkheads are made of vacuum infused balsa sandwich.
- Carbon fiber reinforcements on hull bottom and sheerline as well as on every bulkhead area that need extra strength.
- White gel-coat finish on the hull, white gel-coat finish on the deck and on helm seats, non-skid white gel-coat on roof.
- Watertight bulkheads forward and aft. Bulkheads are laminated and/or bonded to hull and deck.
- Deck made of composite/PVC foam sandwich is vacuum infused as well. Deck beams are carbon fiber reinforced. The entire structure is certified by Germanischer Lloyd classification society.
- Main deck is laid with teak.
- Cockpit sole and seats are laid with teak.
- Keel fitted to the hull with s/s bolts.
- Twin hanging rudders with vacuum infused rudder blades, s/s rudder stocks.
- Vectran steering cable.
- Opening transom/swim platform giving access to tender garage.

DECK HARDWARE

- Carbon bowsprit with fixed davit.
- Electrical windlass, galvanized anchor and chain (100 m, 14 mm dia).
- S/s pushpits and pulpit.
- *Lopolight®* (or similar) LED navigation lights.
- Double s/s lifelines, opening gate in life line on each side.
- 8 mooring cleats and 2 fairleads.
- S/s semi-recessed chainplates.
- Self-tacking track for staysail or genoa.
- *Harken®* (or similar) genoa sheet rail and traveller.
- Recessed companionway sprayhood.
- *Harken®* turning blocks.
- Jammers.
- 2 x *Harken®* (or similar) primary winches in cockpit.
- 2 x *Harken®* (or similar) multipurpose winches in cockpit.
- 1 x *Harken®* (or similar) mainsail electric winch (2 speeds) in cockpit.
- 2 x *Harken®* (or similar) halyards and reef winches on deck at mast step, the starboard winch being electric (2 speeds).
- 2 x fiberglass steering wheels.
- Compass on each steering pedestal.
- 2 x helmsman seats with console for navigation instruments.
- 11 flush deck *Lewmar®* hatches.
- 2 flush *Lewmar®* hatches on cockpit benches (access to galley and to port aft cabin).
- 2 x accesses to lazarets in cockpit.
- 1 x access to garage from cockpit.
- 2 x accesses to liferafts lockers from cockpit.
- Teak cockpit table (option to convert it into a sunbath area).
- Space for optional fridge.

FOREPEAK

- The sail locker (forepeak) is large enough to accommodate a crew cabin.
- Large deck hatch (with exterior lock) covered with teak (or in PMMA as an option),

- S/s ladder.
- The standard equipment includes Lights and Handrails.
- Access to:
 - Bow thruster (optional),
 - Chain locker and windlass electrical control box,
 - Hydraulic central station for forward furlers (options).

TENDER GARAGE

- The tender garage is accessible from the transom when opened and from a deck hatch located in the cockpit.
- The garage can accommodate up to a 3.50 m RIB type tender with outboard engine, or a 3.85 m Williams type jet tender.
- Dedicated system to help getting the tender in and out of the garage. The large hydraulic aft platform spread to the sea and serve as a launching ramp.
- S/s swim ladder with teak steps integrated in the platform.
- Self-draining garage, with natural ventilation.

LAZARETS

- There is one lazaret on port, one on starboard.
- Access from cockpit or from tender garage.
- Several attachment points.
- Electric bilge pump.
- Access to steering mechanism and optional autopilot.
- Light topcoat finish.

SPARS AND RIGGING

- Silver anodised aluminium mast, 3 sets of spreaders.
- Silver anodised aluminium boom (pre-equipped for automatic reefing system).
- Rod standing rigging.
- Running rigging.
- Hydraulic vang, backstay and halyards adjusters.
- Deck and mooring lights.
- Manual genoa furling system.
- *Windex*®.

ENGINE

- Engine: Volvo Penta D4 - 175hp, @ 2800 rpm (optional 205hp, @ 2800 rpm)
- Sound proof engine compartment (extra density plate).
- S/s shaft.
- 3 fixed blades propeller.
- Engine control panel on starboard helm console.
- Fuel tankage: 2500 liters in two aluminum tanks, located in the middle of the boat.
- Fuel settling tank.

WATER

- 1500 litres fresh water in two s/s tanks, located in the middle of the boat.
- Pressurised hot and cold water system.
- 100l water heater on 220V, and heat exchanger from main engine.

- Fresh water shore inlet.
- Manual bilge pump.
- Electrical automatic bilge pumps.
- Grey water electric pumps with 3 x 100 L holding tanks.

ELECTRICAL

- Electrical panel 24V / 230V. Control panel in the aft area (galley).
- 1 Shoreline 63Ah.
- 17,5 Kva, 50 Htz Genset.
- 2 x 24V / 100 Ah battery chargers for service batteries.
- 12V alternator on main engine.
- 24V alternator on main engine, 80 Amp.
- 24V service gel batteries bank, 840 Amp/h capacity.
- 24V / 230 V / 5000W inverter.
- Main engine and generator start batteries.
- 24V interior lighting.
- 12V & 230V electric outlets.

ACCOMMODATIONS

- Wood finish: colored oak and lacquered areas.
- Exposed sides of the floorboards protected via impregnation for an extra high impact resistance.
- Wide doors.
- Blinds on portholes.
- Blinds and mosquito nets on deck hatches.
- Handrails.

COMPANIONWAY

- Access to the saloon is through a sliding hatch and a retractable door (electrical in option).
- Companionway wooden steps with recessed lighting.
- Handrails.

ENGINE ROOM

- Underneath the saloon floor, the engine room is located at the most favorable place for the boat's balance.
- Access by hatches on the saloon floor, and dedicated hatch under the galley entrance steps.
- Sound insulated engine compartment.
- Fixed controlled fire extinguisher of the engine located in the saloon.
- Lights.
- 230 V outlets.
- This compartment receives the main Volvo diesel engine, the Onan generator in its soundproof cocoon, the Termodinamica air conditioning system (option), the Sea Recovery water-maker (option), the water heater, pumps, filters.
- The diesel and fresh water tanks are located on each side of the engine room.

SALOON

- Just under the deckhouse, the saloon hosts the navigation area, a convertible sofa and a dining/saloon area.
- Direct and indirect lighting via overhead and reading lights.

- Night courtesy lights & 230 V outlets.
- Numerous lockers alongside the hull and behind the seat backs.

Navigation area (starboard)

- Chart table with chart and pencil storage.
- 230 V outlets.
- Space for instruments displays, bookshelf.
- Space for audio system.

Lounge space (starboard)

- Relaxing sofa to starboard, which can be converted into two facing armchairs.
- Recessed bar behind the sofa.
- Space for an ice maker (option).

Dining area (portside)

- Large U shaped settee to port.
- Extending dining / cocktail table for 8.
- Niche for a lit painting and the optional TV on lift.

GALLEY

- The galley is located at aft to starboard, five steps underneath the saloon area, for better privacy in the saloon and forward cabins.
- Access to the cockpit via a foldable ladder beneath the opening hatch.
- Ventilation and natural light via cockpit hatch and portholes.
- Range hood.
- Direct and indirect lighting above worktops.
- Functional U shaped organization, with a bar worktop and two stools.
- Electrical distribution switchboard.
- The galley also includes:
 - Low and high storage lockers,
 - White *Corian*TM worktop,
 - S/s double sink with single lever mixer tap,
 - Refuse bin under the sink,
 - *Miele*® gimballled 4 burners electric stove and oven (gas optional),
 - Microwave linked to the inverter,
 - 140 L capacity front opening freezer (aft of galley),
 - 190 L capacity front opening fridge with 70L capacity freezer compartment (front of galley)
 - 230V outlets,
 - Fastening belt for cooking when the boat is heeling,
 - Space for *Miele*® dishwasher (option),
 - Space for *Miele*® washer-dryer, 5kgs capacity (option),
 - Space for trash compactor and sink food waste disposer (option),
 - Space for Webasto wine cooler (option),
 - Space for additional Webasto fridge or freezer (option).

OWNER'S CABIN

- The owner's cabin is located forward and runs across the full width of the ship.

- Light and ventilation via 3 fixed hull portholes and 3 opening deck hatches.
- General lighting and reading lights.
- Double berth, 2.05m x 1.60m.
- Drawers and lockers underneath.
- Bookshelves and lockers on forward bulkhead, with recess for TV.
- Hanging locker to starboard.
- Locker to port.
- Lower lockers to port and starboard.
- Working desk to starboard.
- 230V outlets.
- The owner's cabin has a fully **private en suite toilet & shower**:
 - Separate shower stall with grating,
 - One fixed porthole and one opening deck hatch for light and ventilation,
 - White *Corian*TM worktop
 - Overhead light, and secondary light close to mirror,
 - Automatic waste water pump out to grey water holding tank,
 - *Tecma*TM (or similar) fresh water electric marine toilet with holding tank,
 - Washbasin with hot and cold water,
 - Bathroom cabinet with electric shaver plug,
 - Mirror, heating towel holder, toilet roll holder.

PORT GUEST CABIN

- Double lateral bed to port, 2.05m x 1.60m, with a possibility to separate it into 2 single berths.
- Drawers and lockers underneath.
- Light and ventilation via fixed hull porthole and opening deck hatch.
- General lighting and reading lights.
- Hanging locker on portside.
- Lockers.
- 230 V outlets.
- The port guest cabin has a private **en suite toilet & shower**:
 - Separate shower stall with grating,
 - Opening deck hatch for light and ventilation,
 - White *Corian*TM worktop
 - Overhead light, and secondary light close to mirror,
 - Automatic waste water pump out to grey water holding tank,
 - *Tecma*TM (or similar) fresh water electric marine toilet with holding tank,
 - Washbasin with hot and cold water,
 - Bathroom cabinet with electric shaver plug,
 - Mirror, toilet roll holder.

STARBOARD GUEST CABIN

- Lateral single bunk beds to starboard, 2.05m long.
- Lower bed extendable to double bed, 2.05m x 1.40m.
- Drawers and lockers underneath.
- Light and ventilation via fixed hull porthole and opening deck hatch.
- General lighting and reading lights.
- Hanging locker to starboard.

- 230 V outlets.
- The starboard guest cabin has a **private en suite toilet & shower**, with a second access door for day toilet.
 - Shower stall with grating,
 - Opening deck hatch for light and ventilation,
 - White *Corian*TM worktop
 - Overhead light, and secondary light close to mirror,
 - Automatic waste water pump out to grey water holding tank,
 - *Tecma*TM (or similar) fresh water electric marine toilet with holding tank,
 - Washbasin with hot and cold water,
 - Bathroom cabinet with electric shaver plug,
 - Mirror, toilet roll holder.

AFT PORT GUEST CABIN

- 2x single beds, 2.00m long. Convertible into a double bed.
- Light and ventilation via fixed hull porthole, opening portholes and opening hatch to cockpit.
- General lighting and reading lights.
- Drawers and lockers underneath.
- Hanging locker on portside.
- Lockers alongside.
- 230 V outlets.
- The aft port cabin has a **private en suite toilet & shower**:
 - Separate shower stall with grating,
 - Electric ventilation,
 - White *Corian*TM worktop
 - Overhead light, and secondary light close to mirror,
 - Automatic waste water pump out to grey water holding tank,
 - *Tecma*TM (or similar) fresh water electric marine toilet with holding tank,
 - Washbasin with hot and cold water,
 - Bathroom cabinet with electric shaver plug,
 - Mirror, toilet roll holder.



LAFOURCADE/YACHT BROKER

o.lafourcade@yachtbroker.fr - +33 680 593 873



LAFOURCADE/YACHT BROKER

o.lafourcade@yachtbroker.fr - +33 680 593 873



LAFOURCADE/YACHT BROKER

o.lafourcade@yachtbroker.fr - +33 680 593 873



LAFOURCADE/YACHT BROKER

o.lafourcade@yachtbroker.fr - +33 680 593 873





LAFOURCADE/YACHT BROKER

o.lafourcade@yachtbroker.fr - +33 680 593 873







LAFourCADE/YACHT BROKER

o.lafourcade@yachtbroker.fr - +33 680 593 873



LAFOURCADE/YACHT BROKER

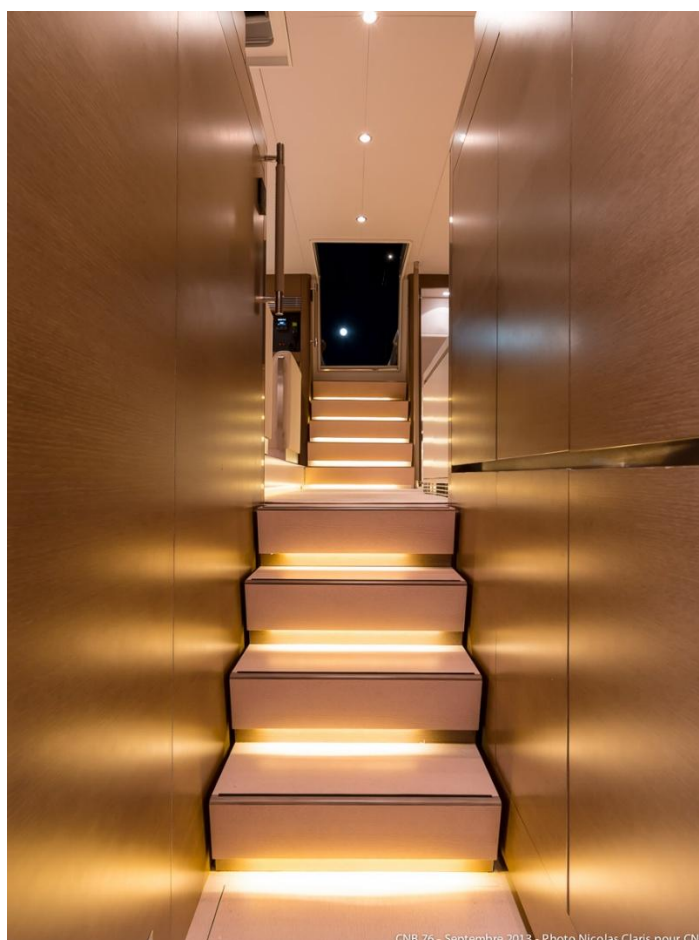
o.lafourcade@yachtbroker.fr - +33 680 593 873











CNB 76 - Septembre 2013 - Photo Nicolas Claris pour CNB

LAFOURCADE/YACHT BROKER

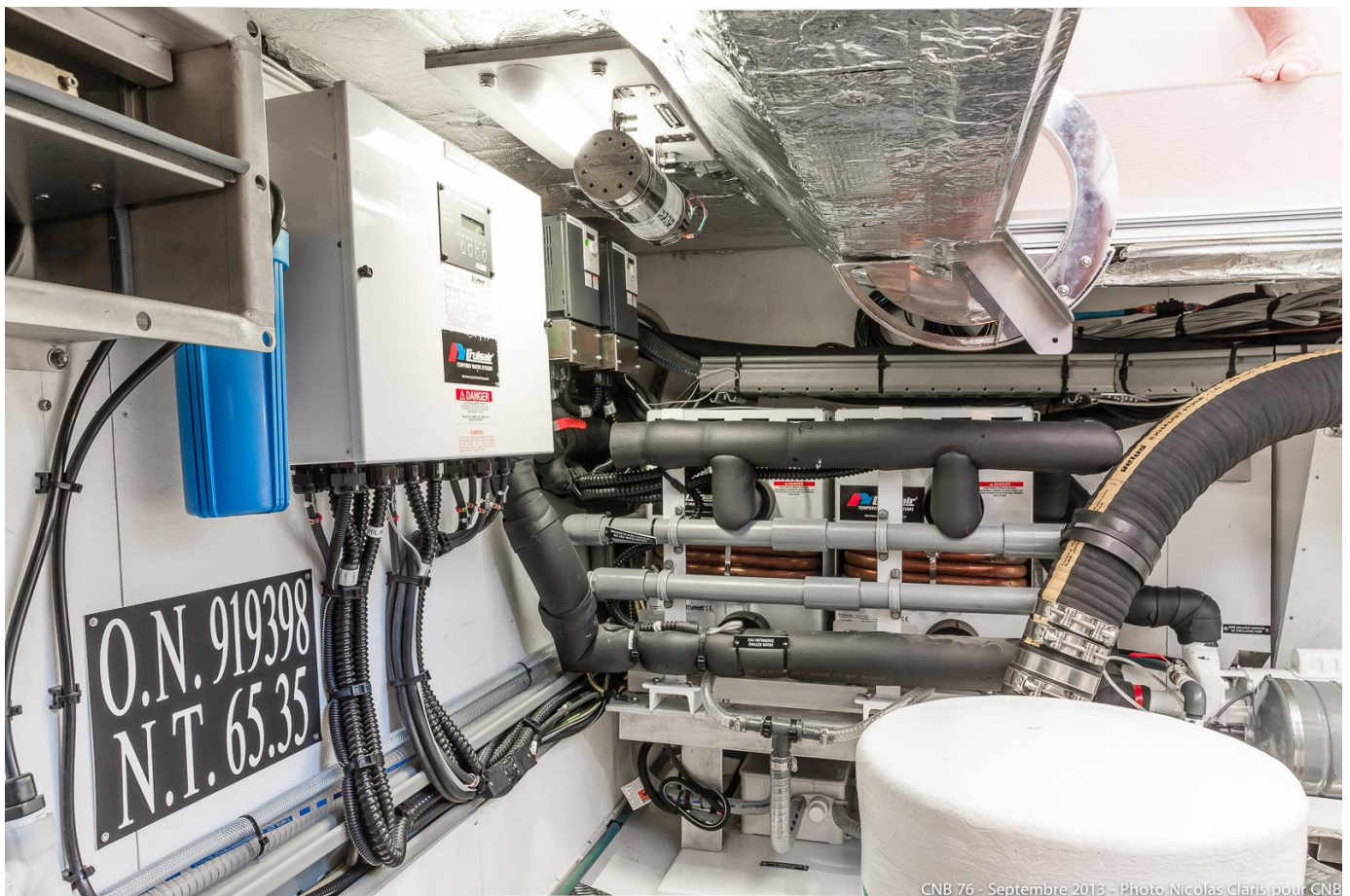
o.lafourcade@yachtbroker.fr - +33 680 593 873



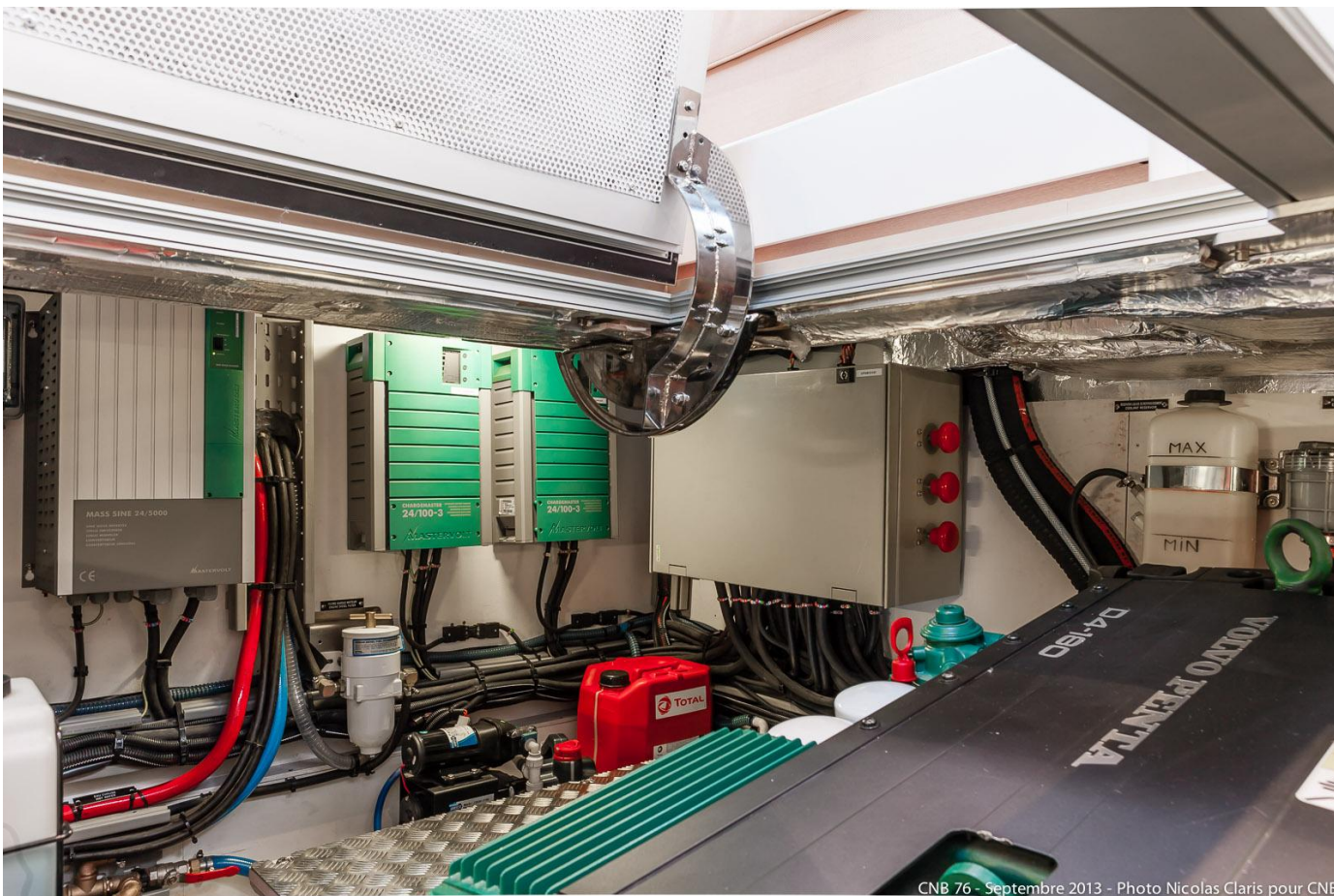
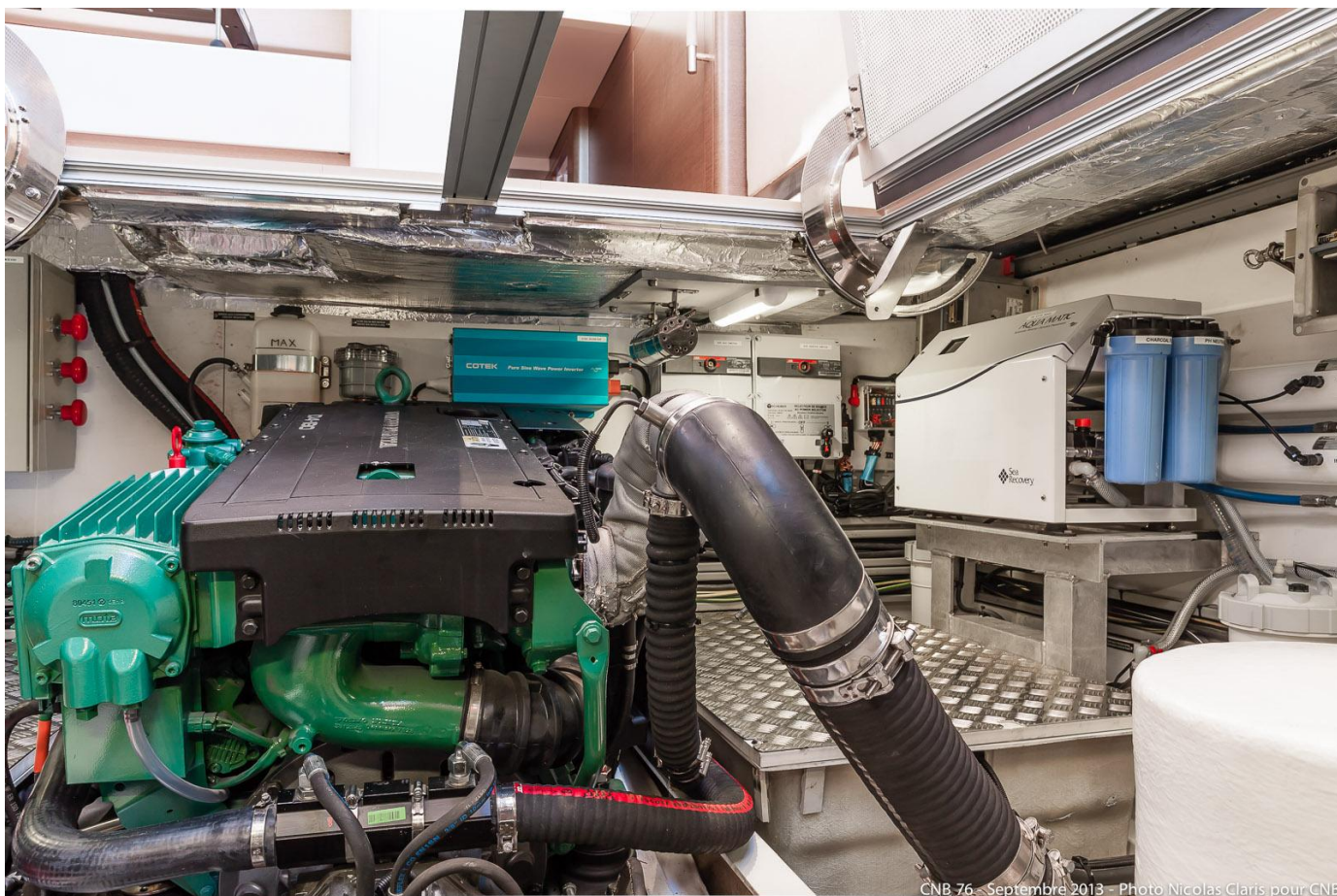


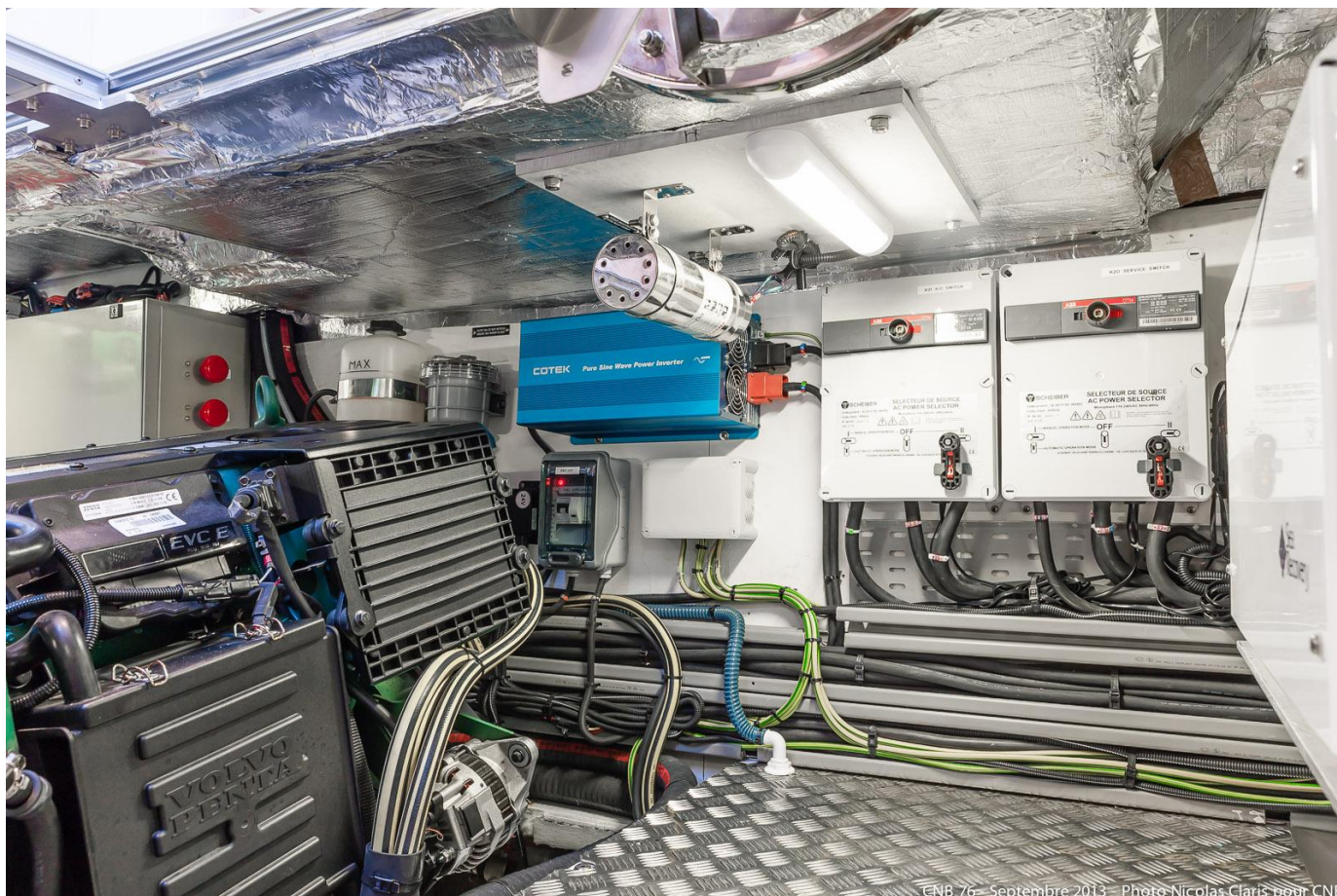






CNB 76 - Septembre 2013 - Photo Nicolas Glaris pour CNB





CNB 76 - Septembre 2013 - Photo Nicolas Claris pour CNB

DISCLAIMER: This document is not contractual. All specifications are given in good faith and offered for informational purposes only. The publisher and company do not warrant or assume any legal liability or responsibility for the accuracy, completeness or usefulness of any information and/or images displayed. Yacht inventory and specifications are subject to change without prior notice. None of the text and/or images used in this brochure may be reproduced without written consent from the publisher